

Product Information High Temperature Adapters

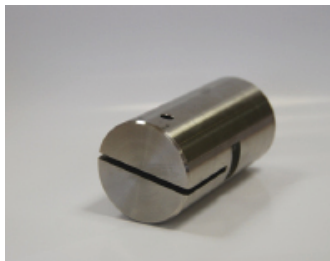
Tensile Test's



Threaded couplings



Round tension test specimen with threaded head



Clevis couplings



Pin-loaded flat tension test specimen



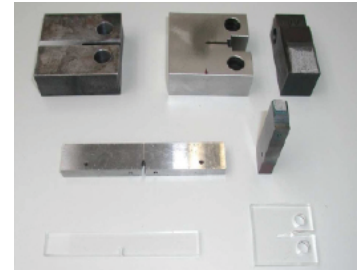
Clevis couplings and pin-loaded pipe-segment tension test specimen



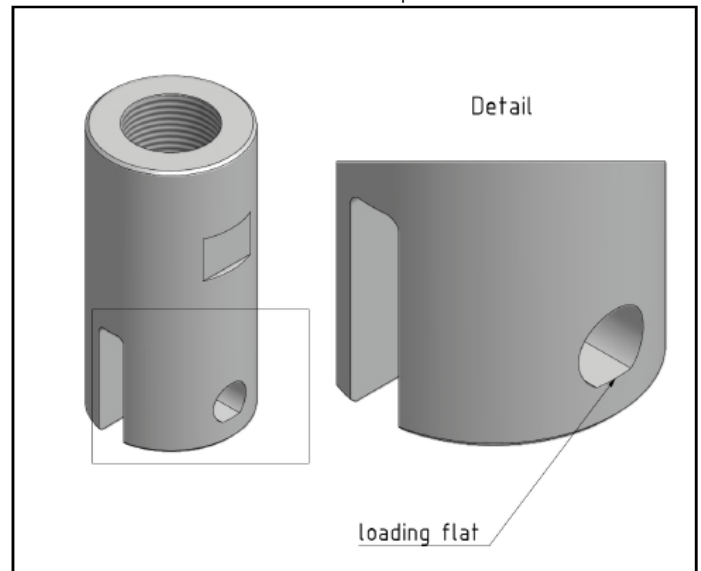
Creep Crack Growth Test's



Clevis coupling with loading flat



Specimen for Creep Crack Growth Test



Application Tensile Tests

For High Temperature Tensile Test's there is a wide range of Adapters available. There are Standard Threaded couplings for metric and inch-sizes and Standard Clevis couplings for flat and pipe segment specimen. The Standard Materials are Inconel 718, Saratherm S2 and MAR-M246. Other Shapes, dimensions and materials are available upon request.

Features

The couplings are designed for easy handling and proper holding with high temperature applications. The materials used are high temperature resistant alloys with optimized creep properties. Inconel 718 (2.4668) is used up to temperatures of 700 °C. Saratherm 2 and MAR-M246 (2.4676) are used up to temperatures of 1200 °C.

Application Creep Crack Growth Tests

For Creep Crack Growth Test's there are Clevis couplings with a loading flat acc. to ASTM E 1457. There are Standard Materials / Sizes and customer specific couplings available.

Features

To measure the Load Line deflection with a Clip Gauge-Extensometer and the Creep Crack Growth with potention drop method the Couplings / Pull rods are electrically isolated from the load frame.

Product Information High Temperature Adapters

Materials available:

Inconel 718 (2.4668)	up to 700 °C
Saratherm 2	up to 1200 °C
MAR-M246 (2.4676)	up to 1200 °C

Data

- Threaded couplings

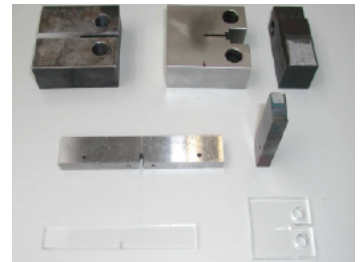


Creep strength (1000 h) e.g. MAR-M246:

Specimen Thread Sizes: M4, M5, M6, M8, M10, M12, M16, M18, M20
Dimensions: 50 mm dia / 80 mm length

Data

- Clevis couplings with loading flat



Standard Dimensions for CT-specimen acc. ASTM E 1457

Slot	6 mm	10mm	19 mm	25 mm	Other Shapes, dimensions and materials available upon request
Pin	Ø 3 mm	Ø 5 mm	Ø 9,5 mm	Ø 12,5 mm	

Data

- Clevis coupling for flat specimen



Standard Dimensions

Slot	1 ... 3 mm	3 ...6 mm	6 ...10 mm	Other Shapes, dimensions and materials available upon request
Pin	Ø 6 mm	Ø 10 mm	Ø 12,5 mm	

Dimensions: 50 mm dia / 100 mm length

Data

- Clevis couplings for pipe segments



Customer specific shapes, dimensions and materials are available upon request.

Required data: see drawing below.

