

Product Information

1.200°C High Temperature Load String for KAPPA



figure 1: Complete load string for HT-Tensile Creep Testing with Electromechanical Machines



figure 2: Complete load string for HT-Tensile Creep Testing with Leverarm Machines

Application Kappa DS/SS/LA

The HT-Tension load string is suitable for monotonic and quasi-static tensile tests up to 1.200 °C. Interchangeable specimen adapters allow various specimen sizes, various specimen shapes (round and flat) and various test types (tensile, creep crack etc.).

Features Kappa DS/SS

- Optimized alignment according to ASTM E 292 and EN 10002/5
- Upper adapter and upper pull rod with spherical seating
- Lower adapter and lower pull rod with adjustable seating, fixed by a clamping lever
- Pull rods and specimen adapters manufactured from a nickel based superalloy with superior high temperature and creep properties

Features Kappa LA

- Optimized alignment according to ASTM E 292 and EN 10002/5
- Wear free elastic hinges
- Pull rods and specimen adapters are manufactured from a nickel based superalloy with superior high temperature and creep properties

Product Information

1.200°C High Temperature Load String for KAPPA

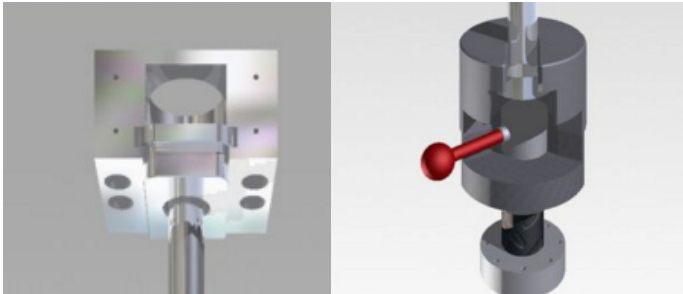


figure 3: Adapters for Electromechanical Creep Testers
Kappa DS and Kappa SS

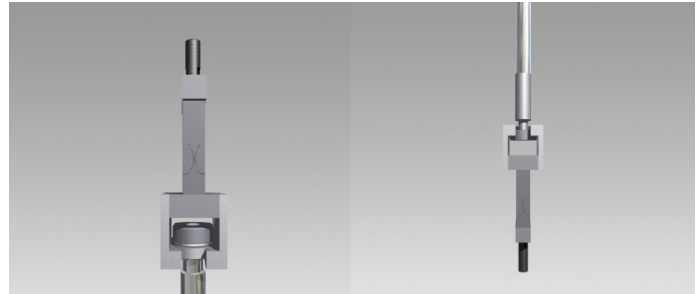


figure 4: Wear free elastic Hinges for
Lever Arm Creep Testers Kappa LA

Specifications for Kappa DS/SS/LA Load Stings

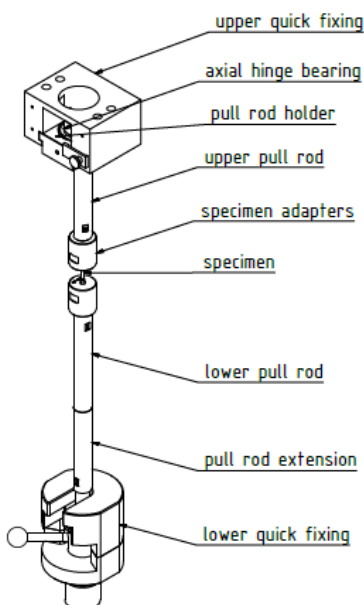
Manufactured from non corrosive nickel-based alloys. Pull rod diameter: 34 mm

High temperature pull rods up to 1.200 °C (valid for 1.000 hours):

- Maximum load at 900 °C: 100 kN
- Maximum load at 1.000 °C: 50 kN
- Maximum load at 1.200 °C: 4 kN

Pull rod extension: necessary for '4-rod' type extensometers

Load string - Design for Kappa DS/SS



Upper pull rod: spherically seated
Lower pull rod: adjustable around longitudinal axis,
rigid seating by means of clamping
lever

Load string - Design for Kappa LA

